



SafecomLink

for Emergency communications

The Complete EmComm Tactical Scenarios Guide

V1.3



Tactical EmComm scenarios outlined in this guide.

This guide provides examples of real-life EmComm tactical needs and demonstrates how SafecomLink can be leveraged to address them.

1. EmComm operators' check-ins
2. Issuing an emergency alert to all EmComm operators
3. Sending emergency SafeMail without a direct link to your destination
4. Sending images of a missing person
5. Group chat/check-ins of all EmComm operators
6. Live chat between stations with no direct link (through digipeater)
7. Finding a SafeMail path to an unreachable station

* Please note: Digipeater use cases showcased here are available exclusively with VaraFM.

Tactical need #1

EmComm operators' check-ins



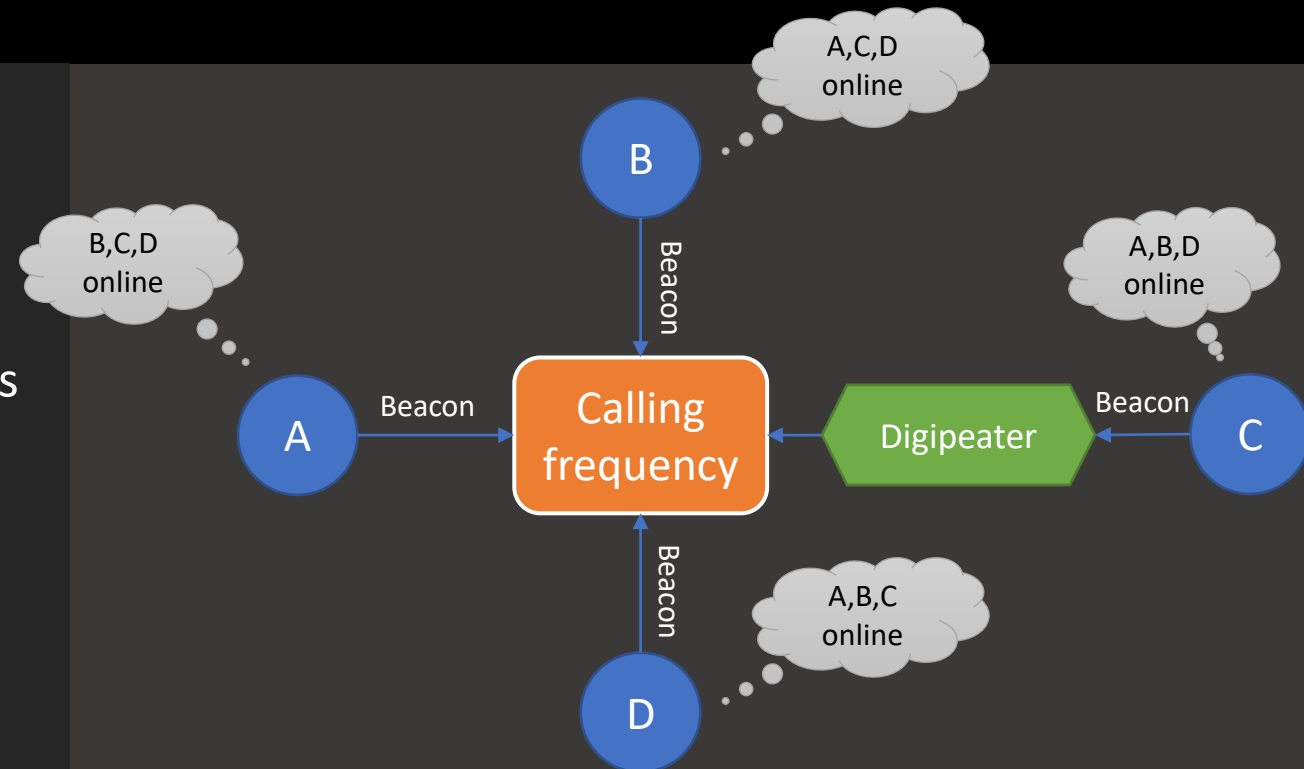
SafecomLink Features used:

Beacons

SafecomLink Beacons are an excellent tool to notify your EmComm network that you are online and available for any type of communication.

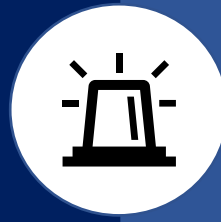
How

1. All operators set a beacon to fire every X minutes on an agreed calling frequency.
2. They can all see each other on the "Last Heard Beacons" with the latest timestamp.
3. Digipeaters can be used to extend the reach.



Tactical need #2

Issuing an emergency alert to all EmComm operators

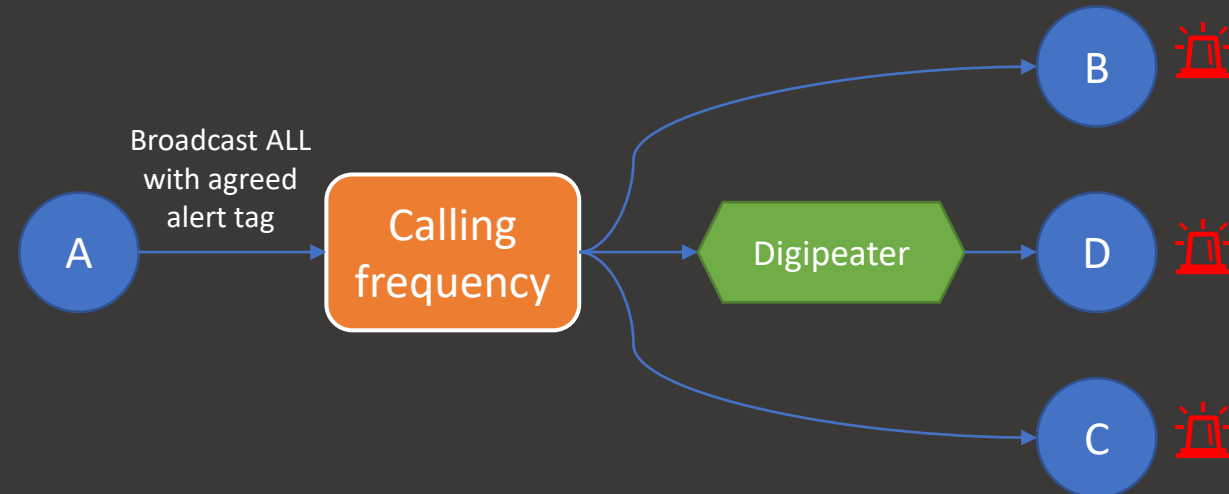


SafecomLink Features used:
Alert tags, Broadcast

Broadcasting functions as a one-to-many transmission that can also spread through VaraFM digipeaters. When combined with a pre-defined alert tag, it becomes an excellent method for rapidly distributing a critical message throughout the entire EmComm network within seconds.

How

1. Define an alert tag and share it among all your EmComm networks. (The alert tag definition is stored in a file you can easily distribute prior to the operation.)
2. If a VaraFM digipeater is available, configure it under settings.
3. Send a broadcast to “ALL” with the alert tag as part of the text.
4. A visual and vocal alert will be triggered on all EmComm stations.



Tactical need #3

Sending emergency SafeMail without a direct link to your destination



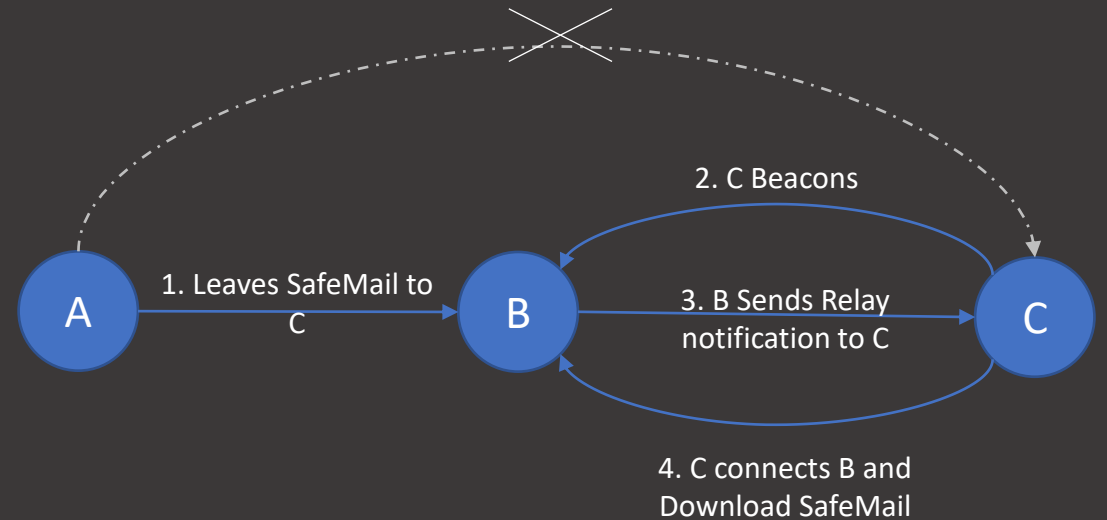
SafecomLink Features used:

SafeMails, Parking, Relay notifications, Beacons

SafecomLink enables you to send SafeMail through third parties. SafeMails can be temporarily parked at a third-party station. Once the destination beacons, the third party notifies it that there is a parked SafeMail waiting to be collected.

How?

1. A connects to B and leaves a SafeMail for C.
2. C beacons.
3. When B decodes the beacons, it sends C a "relay notification alert".
4. C connects to B.
5. B relays the message to C.



Tactical need #4

Sending images of a missing person



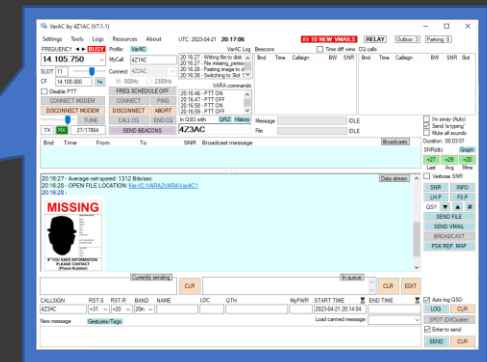
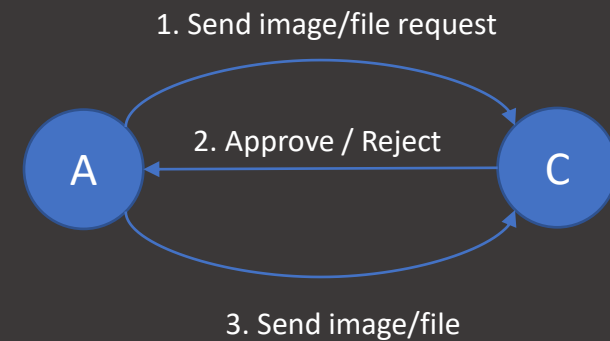
SafecomLink Features used:

Send file

SafecomLink offers lightning-fast file transfers, including images. Received images appear on the screen in the conversation windows, similar to instant messaging apps. The destination can specify the file size under which files will be received without requiring manual approval.

How?

1. A connects to B.
2. A selects a file and compresses it.
3. A sends a "send file request".
4. B automatically/manually approves.
5. A sends the image.
6. The image appears on B's screen.
7. Digipeaters can be used.



Tactical need #5

Group chat/check-ins of all EmComm operators

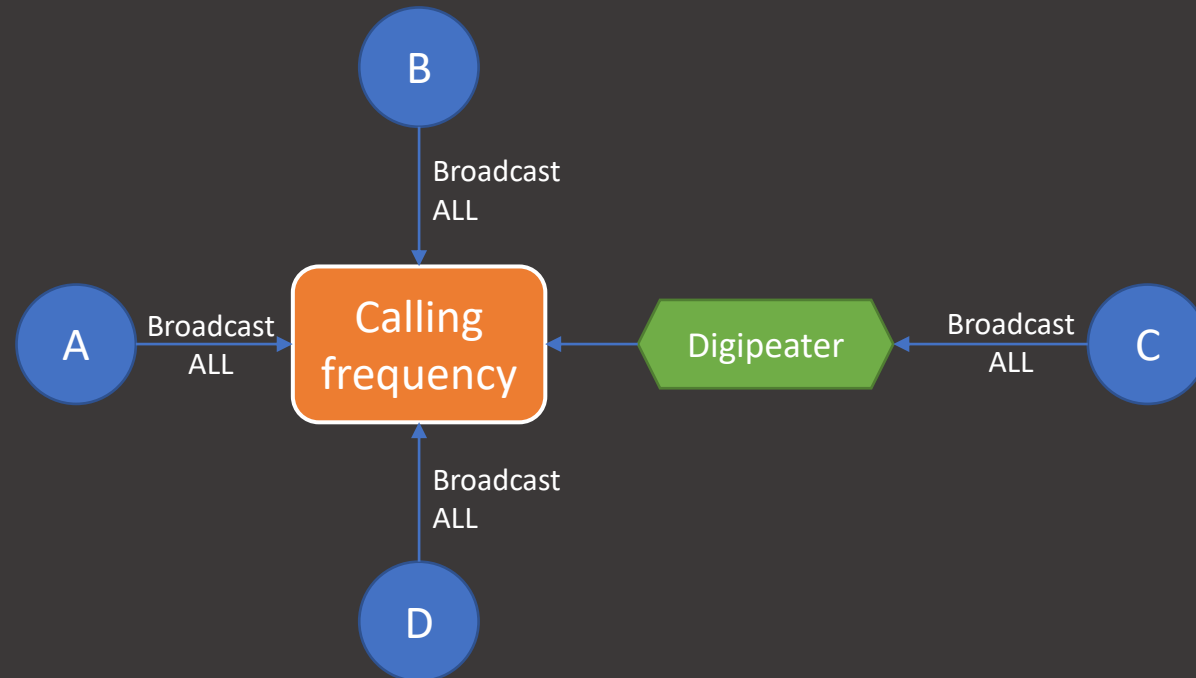


SafecomLink Features used: Broadcasts

SafecomLink broadcasts enable multiple operators to conduct round-table chats in a many-to-many fashion. Broadcasts can also be distributed through digipeaters to reach longer distances, allowing more operators to participate in the round-table.

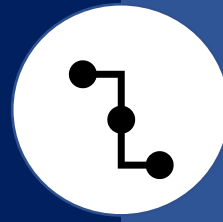
How?

1. All EmComm operators are tuned to the same frequency.
2. Each station sends a broadcast to "ALL".
3. VaraFM Digipeaters can also be used.



Tactical need #6

Live chat between stations with no direct link (through digipeater)

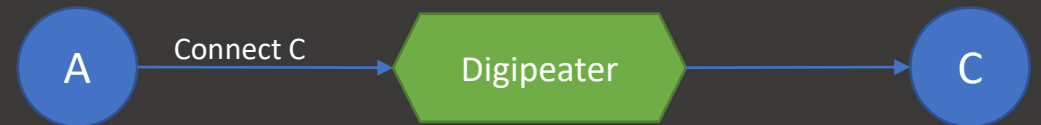


SafecomLink Features used:
Chat, Digipeater

With SafecomLink, chatting is possible either directly or through VaraFM digipeaters. Up to 2 digipeaters are allowed, enabling live chatting over 2 hops.

How?

1. Configure a digipeater under settings.
2. Enter the destination callsign.
3. Connect.



Tactical need #7-A

Finding a SafeMail path to an unreachable station - Way #1

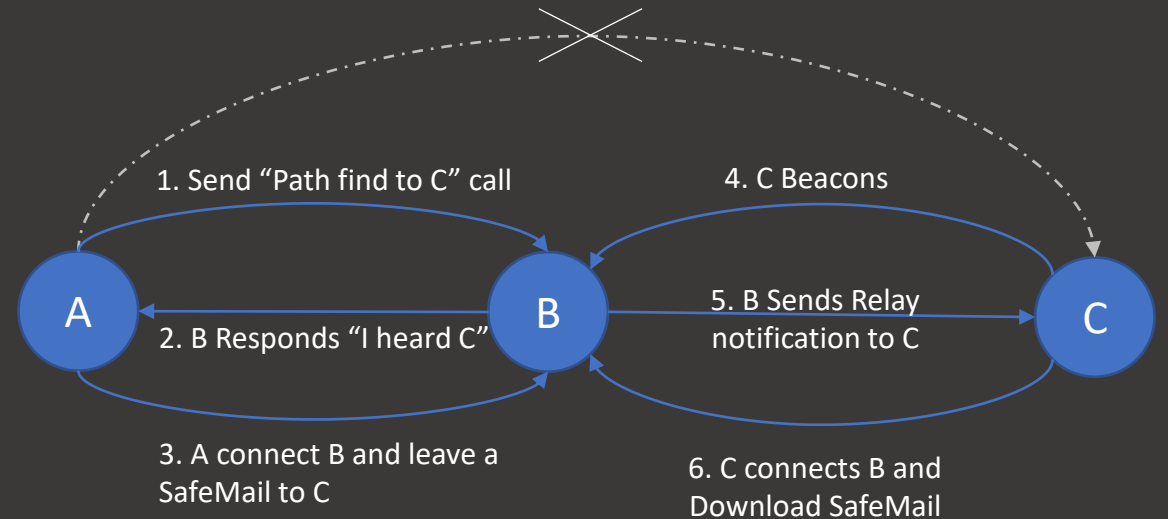


SafecomLink Features used:
SafeMail, Path finder

SafecomLink provides ways to find a path for SafeMail relay to a station you cannot access directly.

How?

1. A sends a "Path find to C" call.
2. B responds that it heard C.
3. A connects to B.
4. A leaves a SafeMail for C at B.
5. B notifies C about a parked SafeMail.
6. C connects to B to collect the SafeMail.



Tactical need #7-B

Finding a SafeMail path to an unreachable station - Way #2

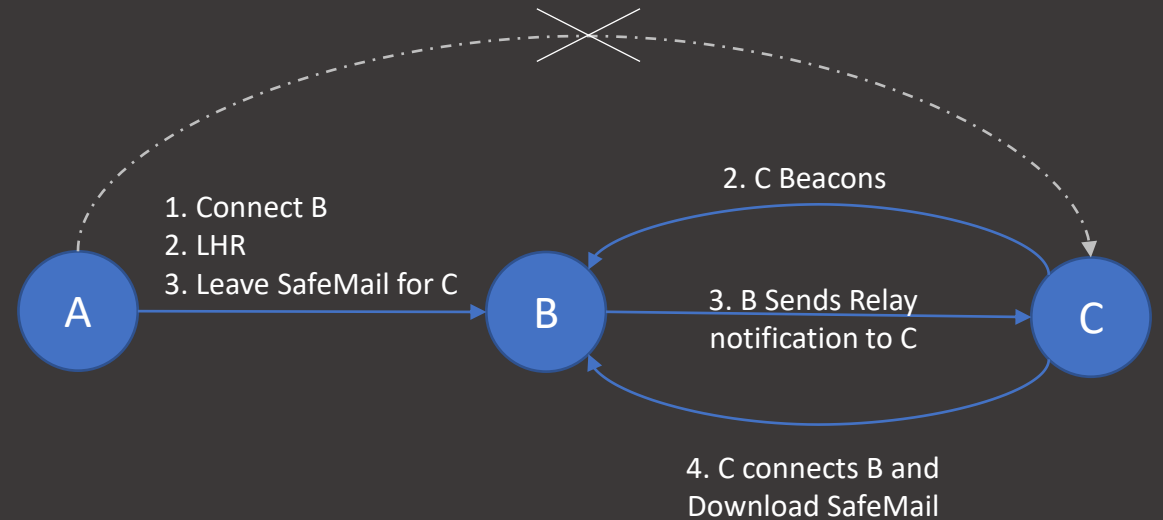


SafecomLink Features used:
SafeMail, Last Heard (LHR)

SafecomLink offers methods to find a path for SafeMail relay to a station you cannot access directly.

How?

1. A intercepts a beacon from B.
2. A connects to B and pulls the last heard stations list using the LHR button.
3. If the destination station C is on that list, A leaves a SafeMail for C at B.
4. B notifies C about a parked SafeMail.
5. C connects to B to collect the SafeMail.



Tactical need #8

Send your location using GPS integration

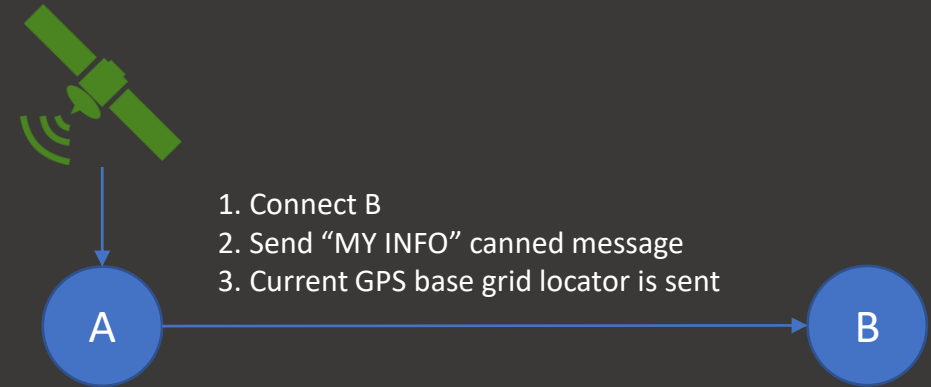


SafecomLink Features used:
GPS integration, canned messages

Effortlessly maintaining real-time updates of your location during a crisis ensures your team remains informed of your precise whereabouts.

How?

1. Setup GPS integration under Settings.
2. SafecomLink reads your GPS position and transform it to grid locator.
3. While connected, Sent your Info using F1.
4. Your location is sent and populated on the other side log.



SafecomLink Tactical drills checklist

#	Tactical scenario	Status	Comments
1	EmComm operators' check-ins	<input type="checkbox"/> Success <input type="checkbox"/> Fail <input type="checkbox"/> Skip	
2	Issuing an emergency alert to all EmComm operators	<input type="checkbox"/> Success <input type="checkbox"/> Fail <input type="checkbox"/> Skip	
3	Sending emergency SafeMail without a direct link to your destination	<input type="checkbox"/> Success <input type="checkbox"/> Fail <input type="checkbox"/> Skip	
4	Sending images of a missing person	<input type="checkbox"/> Success <input type="checkbox"/> Fail <input type="checkbox"/> Skip	
5	Group chat/check-ins of all EmComm operators	<input type="checkbox"/> Success <input type="checkbox"/> Fail <input type="checkbox"/> Skip	
6	Live chat between stations with no direct link (through digipeater)	<input type="checkbox"/> Success <input type="checkbox"/> Fail <input type="checkbox"/> Skip	
7-A	Finding a SafeMail path to an unreachable station (Way #1)	<input type="checkbox"/> Success <input type="checkbox"/> Fail <input type="checkbox"/> Skip	
7-B	Finding a SafeMail path to an unreachable station (Way #2)	<input type="checkbox"/> Success <input type="checkbox"/> Fail <input type="checkbox"/> Skip	
8	Send your location using GPS integration	<input type="checkbox"/> Success <input type="checkbox"/> Fail <input type="checkbox"/> Skip	